



Irrigation

Measure water levels and pressure in remote tanks and bores.

Receive fuel level, battery voltage, engine data and error codes from diesel pumps. Monitor solar performance and battery levels for solar installations. Identify pump cavitation.

Remotely control or automate remote pumps valves, pivots, and more with start, stop, and engine speed control. Measure water level in one area and control a pump in another.

Interface to a water meter to maximise supply to crops and stay within allocations.

Connect to water level and pressure sensors with the 4-20mA inputs.

Interface with water meters, engine controllers, or engines with RS232, RS485 Modbus, or CAN-Bus..

Use the inbuilt accelerometer to detect vibration changes.

Enable SMS and email alerts.

Integrated GPS for location.

Why Senquip?



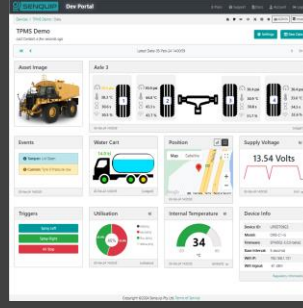
Connect to Anything

Interface to any engine, controller, or sensor, no matter the brand, physical interface, or protocol.



Process Everything

Edge process measured data, create custom alerts, and control connected systems.



Send Anywhere

Send data to the Senquip Portal or any other server. No ongoing costs, no lock in contracts.



Trusted Everywhere

Designed for use in harsh industrial, mining, and agricultural environments.



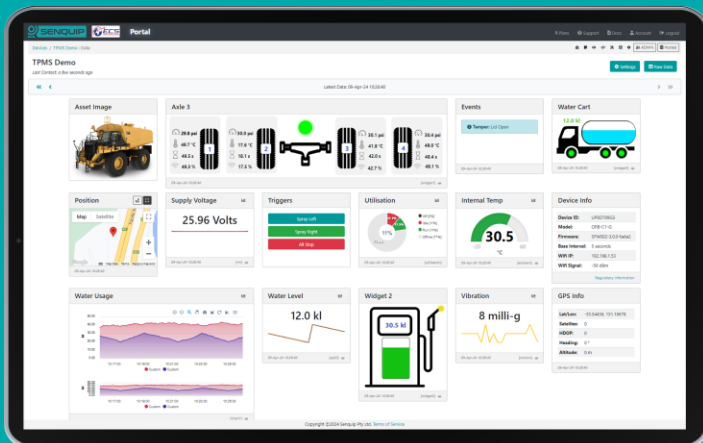
Senquip ORB

For extreme environments where IP ratings are essential and external antennas may be damaged. Typically mounted on poles, walls, and externally on machines



Senquip QUAD

For harsh environments where external antennas are a benefit. Typically found in electrical cabinets, in operator cabs, and mounted externally on machines.



Senquip Portal

The Senquip Portal is a secure cloud solution that offers a no-cost or low-cost device management and data hosting + analytics solution for Senquip devices.



TELEMETRY FOR HARSH ENVIRONMENTS